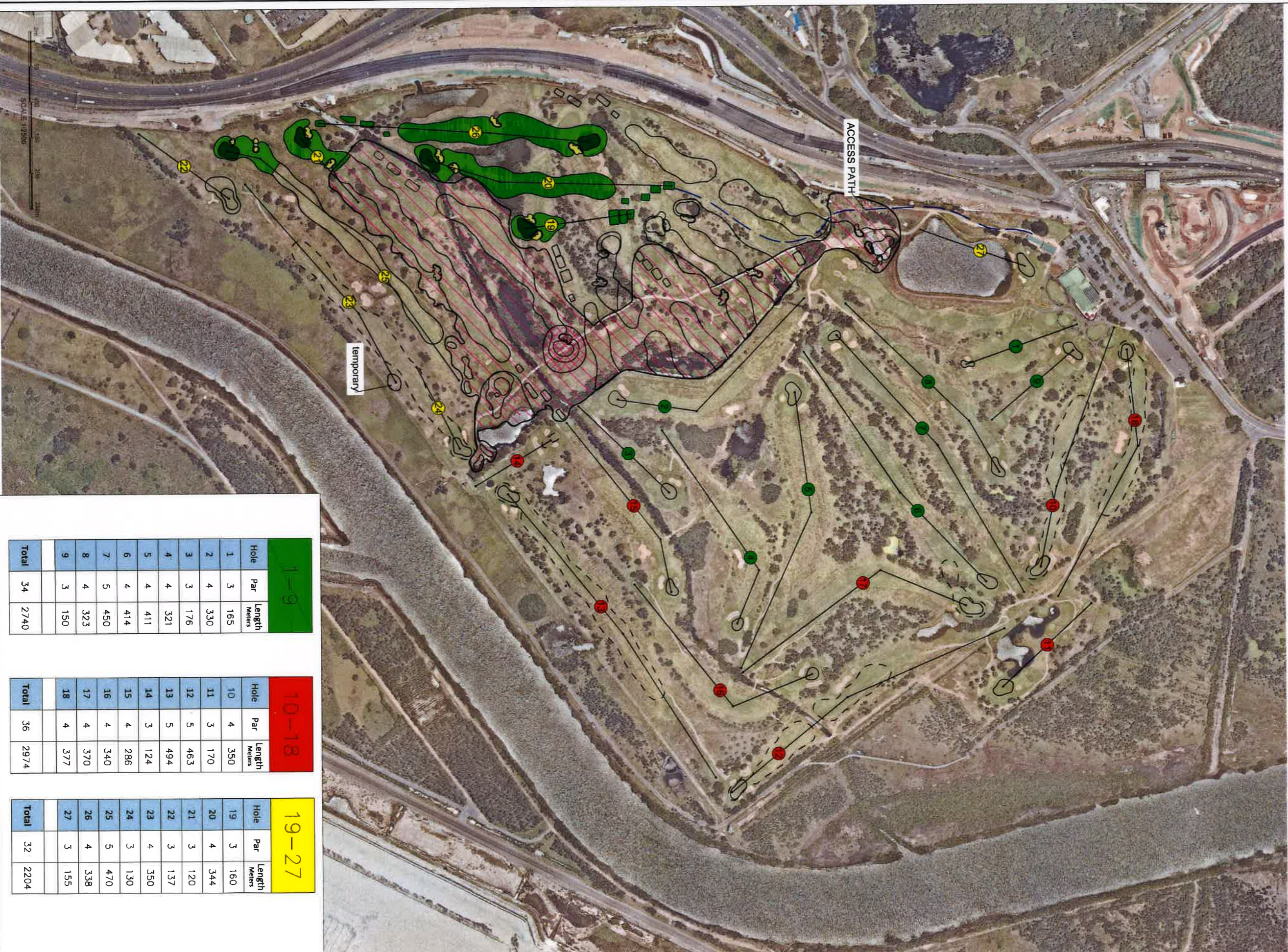


# CONSTRUCTION STAGING PLAN TRANSITION STAGE 1 TO 2



1-9			
Hole	Par	Length Meters	
1	3	165	
2	4	330	
3	3	176	
4	4	321	
5	4	411	
6	4	414	
7	5	450	
8	4	323	
9	3	150	
Total	34	2740	

10-18			
Hole	Par	Length Meters	
10	4	350	
11	3	170	
12	5	463	
13	5	494	
14	3	124	
15	4	286	
16	4	340	
17	4	370	
18	4	377	
Total	36	2974	

19-27			
Hole	Par	Length Meters	
19	3	160	
20	4	344	
21	3	120	
22	3	137	
23	4	350	
24	3	130	
25	5	470	
26	4	338	
27	3	155	
Total	32	2204	